

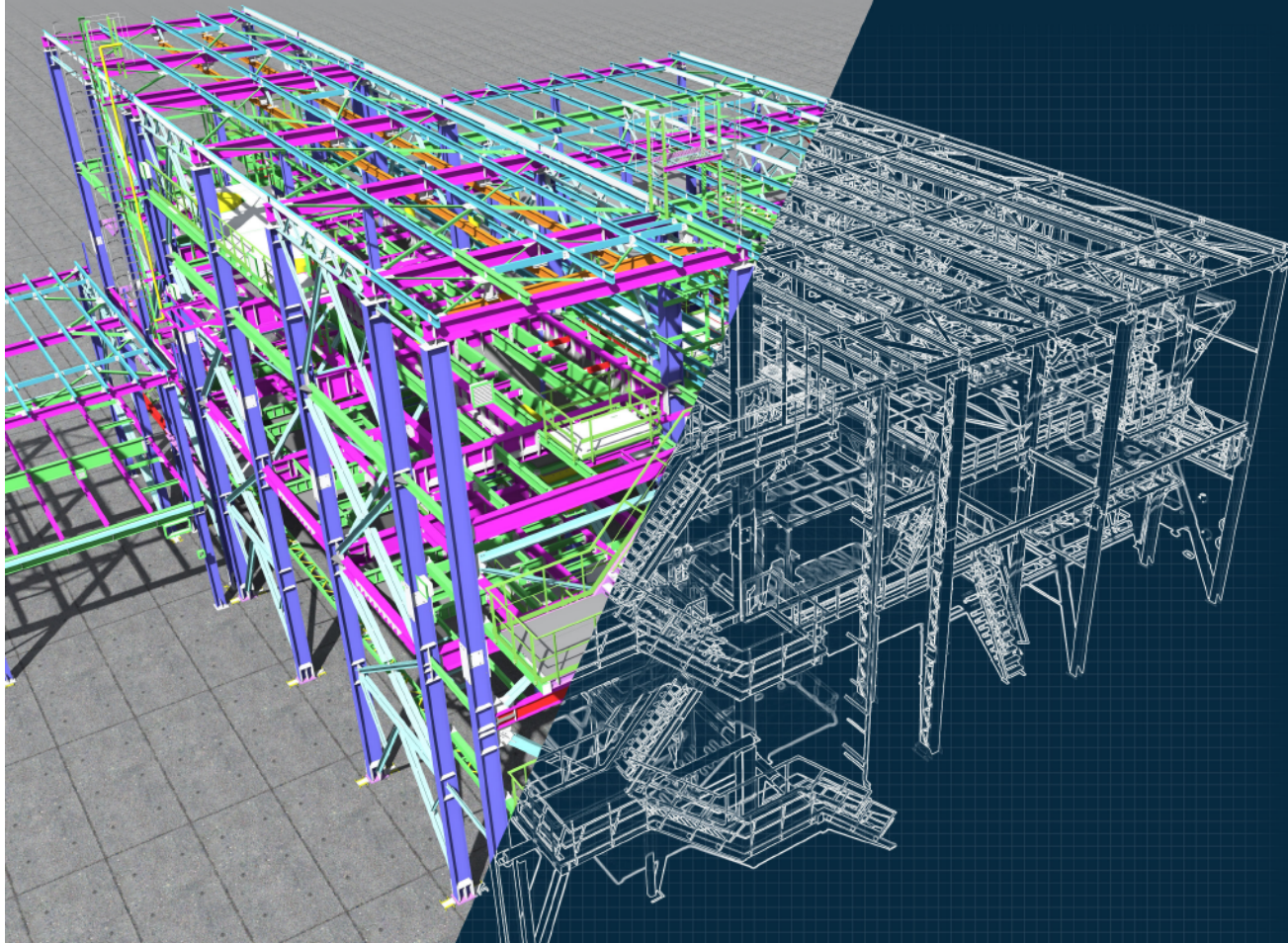
STANDARDS



a BICSI International Standard

ANSI/BICSI 003-2024

**Building Information Modeling (BIM)
Practices for Information
Communication Technology Systems**



ANSI/BICSI 003-2024

Building Information Modeling (BIM) Practices for Information Communication Technology Systems

Committee Approval: December 10, 2023

ANSI Final Action: January 29, 2024

First Published: February 29, 2024



This page intentionally left blank

BICSI International Standards

BICSI international standards contain information deemed to be of technical value to the industry and are published at the request of the originating committee. The BICSI International Standards Program subjects all of its draft standards to a rigorous public review and comment resolution process, which is a part of the full development and approval process for any BICSI international standard.

The BICSI International Standards Program reviews its standards at regular intervals. By the end of the fifth year after a standard's publication, the standard will be reaffirmed, rescinded, or revised according to the submitted updates and comments from all interested parties.

Suggestions for revision should be directed to the BICSI International Standards Program, care of BICSI.

Copyright

This BICSI document is a standard and is copyright protected. Except as permitted under the applicable laws of the user's country, neither this BICSI standard nor any extract from it may be reproduced by any means, electronic or mechanical, including photocopying, stored within any information storage and retrieval system, including artificial intelligence and/or large language models, or transmitted in any form or by any means without prior written permission from BICSI being secured.

Requests for permission to reproduce this document should be addressed to BICSI.

Reproduction may be subject to royalty payments or a licensing agreement.

Violators may be prosecuted.

Published by:



BICSI
8610 Hidden River Parkway
Tampa, FL 33637-1000 USA

Copyright © 2024 BICSI
All rights reserved
Printed in U.S.A.

Notice of Disclaimer and Limitation of Liability

BICSI standards and publications are designed to serve the public interest by offering information communication and technology systems design guidelines and best practices. Existence of such standards and publications shall not in any respect preclude any member or nonmember of BICSI from manufacturing or selling products not conforming to such standards and publications, nor shall the existence of such standards and publications preclude their voluntary use, whether the standard is to be used either domestically or internationally.

By publication of this standard, BICSI takes no position respecting the validity of any patent rights or copyrights asserted in connection with any item mentioned in this standard. Additionally, BICSI does not assume any liability to any patent owner, nor does it assume any obligation whatever to parties adopting the standard or publication. Users of this standard are expressly advised that determination of any such patent rights or copyrights, and the risk of infringement of such rights, are entirely their own responsibility.

This standard does not purport to address all safety issues or applicable regulatory requirements associated with its use. It is the responsibility of the user of this standard to review any existing codes and other regulations recognized by the national, regional, local, and other recognized authorities having jurisdiction (AHJ) in conjunction with the use of this standard. Where differences occur, those items listed within the codes or regulations of the AHJ supersede any requirement or recommendation of this standard.

All warranties, express or implied, are disclaimed, including without limitation, any and all warranties concerning the accuracy of the contents, its fitness or appropriateness for a particular purpose or use, its merchantability and its non-infringement of any third party's intellectual property rights. BICSI expressly disclaims any and all responsibilities for the accuracy of the contents and makes no representations or warranties regarding the content's compliance with any applicable statute, rule, or regulation.

BICSI shall not be liable for any and all damages, direct or indirect, arising from or relating to any use of the contents contained herein, including without limitation any and all indirect, special, incidental, or consequential damages (including damages for loss of business, loss of profits, litigation, or the like), whether based upon breach of contract, breach of warranty, tort (including negligence), product liability or otherwise, even if advised of the possibility of such damages. The foregoing negation of damages is a fundamental element of the use of the contents hereof, and these contents would not be published by BICSI without such limitations.

Table of Contents

	Preface	ix
1	Introduction	1
1.1	Overview	1
1.2	Purpose.....	1
1.3	Categories of Criteria.....	1
2	Scope	3
3	Required Standards and Documents	5
4	Definitions, Acronyms, Abbreviations, and Units of Measurement	7
4.1	Definitions	7
4.2	Acronyms and Abbreviations.....	7
4.3	Units of Measurement	8
5	BIM Project Design	9
5.1	Overview	9
5.2	BIM Expectation Plan.....	9
5.3	Contracts.....	9
5.4	Schematic Design.....	10
5.5	Design Development.....	10
5.6	Construction Documents	10
5.7	Bidding and Bid Documents	11
5.8	Construction Administration	11
5.9	A/E Contract Close-out.....	11
5.10	Project Audit.....	11
6	BIM Content Models	13
6.1	Introduction	13
6.2	Organization of Content	13
6.2.1	Overview	13
6.2.2	Categories.....	13
6.2.3	Subcategories.....	14
6.2.4	Approved Subcategories.....	14
6.3	Content Detail.....	17
6.3.1	Overview	17
6.3.2	General Guidelines	18
6.3.3	Levels of Detail	19
6.4	Hosting Behavior	32
7	Object Parameters	33
7.1	Overview	33
7.2	Naming and Identity Parameters.....	33
7.2.1	Overview	33
7.2.2	Usage.....	33

7.3	Shared Parameters and Shared Parameter Files.....	35
7.3.1	Overview.....	35
7.3.2	Examples.....	35
7.4	Global Object Parameters	36
7.4.1	Required.....	36
7.4.2	Recommended	37
7.5	Telecommunications Parameters	37
7.5.1	Overview.....	37
7.5.2	Outside Plant.....	37
7.5.3	Building Interior Facilities Parameters	39
7.5.4	Electronic Safety and Security (ESS) Parameters.....	40
7.5.5	Building Automation Systems (BAS), Management & Control Parameters	41
7.6	Data Centers Parameters	43
8	Information Communication Technology Systems Considerations	45
8.1	Overview.....	45
8.2	Telecommunications, ESS, Data Center and IT Considerations.....	45
8.2.1	Outside Plant Facilities	45
8.2.2	Building Interior Facilities.....	47
8.3	BAS Considerations.....	48
8.3.1	Outside Plant Facilities	48
8.3.2	Building Interior Facilities.....	48
Appendix A	Deploying BIM (Informative).....	51
A.1	Introduction	51
A.2	Implementation.....	51
A.3	Training.....	54
A.4	The First Project:.....	55
Appendix B	About BIM (Informative).....	57
B.1	History and Current Industry Condition	57
B.2	Potential Benefits of BIM	57
B.3	Challenges	59
B.4	The “Information” Within BIM.....	60
B.5	Integrated Project Delivery	61
Appendix C	Related Documents (Informative).....	63

Index of Figures

Section 6	BIM Content Models		
Figure 6-1	Examples of Dedicated and Work Space	15	
Figure 6-2	Coverage Zone Example	16	
Figure 6-3	Example of Symbols Replacing Features.....	18	
Figure 6-4	Example of a Technology Room at a Low Level of Detail.....	19	
Figure 6-5	Example of a Technology Room at an Intermediate Level of Detail	20	
Figure 6-6	Example of a Technology Room at a High Level of Detail	20	
Figure 6-7	Example of a Pathway Plan at a Low Level of Detail.....	22	
Figure 6-8	Example of a Rack at a Low Level of Detail	23	
Figure 6-9	Example of a Wall-Mounted Device at a Low Level of Detail	24	
Figure 6-10	Example of a Wall-Mounted Faceplate at a Low Level of Detail.....	24	
Figure 6-11	Example of a Classroom Technology Plan at an Intermediate Level of Detail.....	25	
Figure 6-12	Example of a Rack at an Intermediate Level of Detail.....	26	
Figure 6-13	Example of a Wall-Mounted Device at an Intermediate Level of Detail	27	
Figure 6-14	Example of a Wall-Mounted Faceplate at an Intermediate Level of Detail	27	
Figure 6-15	Example of a Rough-In Detail Drawing at a High Level of Detail	28	
Figure 6-16	Example of a Rack at a High Level of Detail.....	29	
Figure 6-17	Example of a Wall-Mounted Device at a High Level of Detail	30	
Figure 6-18	Examples of Reflected Ceiling Plans at a High Level of Detail.....	30	
Figure 6-19	Example of a Wall-Mounted Faceplate at a High Level of Detail	31	
Section 7	Object Parameters		
Figure 7-1	Example of Text-based Shared Parameter File	35	
Figure 7-2	Example of a Spreadsheet Shared Parameter File.....	36	
Appendix A	Deploying BIM (Informative)		
Figure A-1	Personnel Hierarchy Example.....	52	
Appendix B	About BIM (Informative)		
Figure B-1	BIM Model of MEP Design.....	58	

Index of Tables

Section 7	Object Parameters		
Table 7-1	Typical Identity Parameters	34	
Table 7-2	Required Object Parameters for All Objects.....	36	
Table 7-3	Recommended Parameters for All Objects	37	

This page intentionally left blank

Preface

Revision History

January 14, 2014 First publication of this standard, titled ANSI/BICSI 003-2014, *Building Information Modeling (BIM) Practices for Information Technology Systems*

February 29, 2024 Revision of ANSI/BICSI 003-2014, retitled and published as ANSI/BICSI 003-2024, *Building Information Modeling (BIM) Practices for Information Communication Technology Systems*

Major Revisions include:

- Revision of Section 5, *BIM Project Design* to reflect changes in BIM projects and methodologies
- Update to terminology related to BIM content
- Update to Section 7.5.4, *Electronic Safety and Security (ESS) Parameters*
- Update to Section 8.3, *BAS Considerations*

Minor Revisions include:

- Removal of unneeded information in Section 6.4, *Hosting Behavior*
- General updates to Section 7, *Object Parameters*
- General updates to Section 8, *Information Communication Technology Systems Considerations*
- Other content updates and editorial corrections

Document Format (Usability Features)

This standard has the following usability features as aids to the user:

- Additions and changes, other than those for editorial purposes, are indicated with a vertical rule within the left page margin.
- Deletion of one or more sentences within unrevised content is indicated with a bullet (•) within the left page margin.

NOTE: The relocation of content within or between sections related to structure, readability, or content alignment is not indicated.

Translation Notice

This standard may have one or more translations available as a reference for the convenience of its readers. As the act of translation may introduce inconsistencies with the original text, where differences between the translation and the published English version exist, the English text shall be used as the official and authoritative version.

This page intentionally left blank

1 Introduction

1.1 Overview

Building information modeling (BIM) is the process of generating and managing building data during its lifecycle. BIM software can generate three-dimensional models used to support the design of a building. Utilizing BIM can incorporate detailed product information, quantities, and properties into the models. This added intelligence has huge potential for improving construction projects and ongoing facilities service. Just as the introduction of computer aided design (CAD) software brought major advancements over hand drawings, BIM is dramatically altering how we communicate building design.

1.2 Purpose

The intent of this document is to expand the implementation of BIM in the telecommunications industry; explain the function and different elements of BIM and suggest which are most useful for telecommunications; and to recommend best practices for BIM's implementation and use.

1.3 Categories of Criteria

Two categories of criteria are specified—mandatory and advisory:

- Mandatory criteria generally apply to protection, performance, administration, and compatibility; they specify the absolute minimum acceptable requirements.
- Advisory or desirable criteria are presented when their attainment will enhance the general performance of the system in all its contemplated applications.

Mandatory requirements are designated by the word *shall*; advisory recommendations are designated by the words *should*, *may*, or *desirable*, which are used interchangeably in this standard. Where possible, requirements and recommendations are separated to aid in clarity.

Notes, cautions, and warnings found in the text, tables, or figures are used for emphasis or for offering informative suggestions.

Where equivalent local codes and standards exist, requirements from these local specifications shall apply. Where reference is made to a requirement that exceeds minimum code requirements, the specification requirement shall take precedence over any apparent conflict with applicable codes.

This page intentionally left blank

2 Scope

The scope of this document will explain the usage of BIM elements provided by product manufacturers as well as the “level of intelligence” integrated once these have been inserted to be part of the overall model. The “level of intelligence” term refers to the very well-defined Level of Detail (LOD) of which each model is comprised by its components and design elements, (this will be elaborated further on this document). This document also attempts to guide the ICT designer:

- During the development process of the 3D model and related modeling tasks
- Throughout the coordination with all disciplines to maintain standardization among all the different low voltage systems
- To deliver an efficient lean model

The development of the BICSI BIM Standard reflects the importance of maintaining a good balance between the 3D modeling industry trends; the project basis of design modeling requirements; and the applicable Codes and Industry Standards. This Standard is based on the current BIM experience of many A/E firms and telecommunications industry experts. With the BICSI BIM Standards the ICT designer should be able to:

- Evaluate the benefits and requirements of BIM before engaging on a new project
- Better define the scope of work on a BIM project
- Have a reference point while designing for BIM
- Efficiently manage the BIM coordination

Finally, the intent of releasing this document is to provide the telecommunications industry a tool and Standard to meet the demands of the fast-paced BIM world.